

Semantics for logistics emissions exchange

Teams: SFC & SINE Foundation

Supported by WBCSD



Teams



Violetta Matzoros

Technical Manager, Digitalization Lead



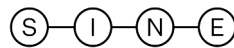
Gabriela Rubio Domingo

Jr Technical Manager



Martin Pompéry

Co-Founder & Co-Chairman



Prasad Tilloo

Technical Project Manager

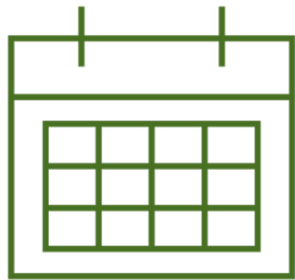
Smart Freight Centre

A global NGO supporting action towards efficient and zero emissions global freight and logistics.

SINE Foundation

A think and do tank (“tech for good NGO”) offering solutions to data sharing dilemmas.

Outline



Goal: Present iLEAP & gauge participation interest

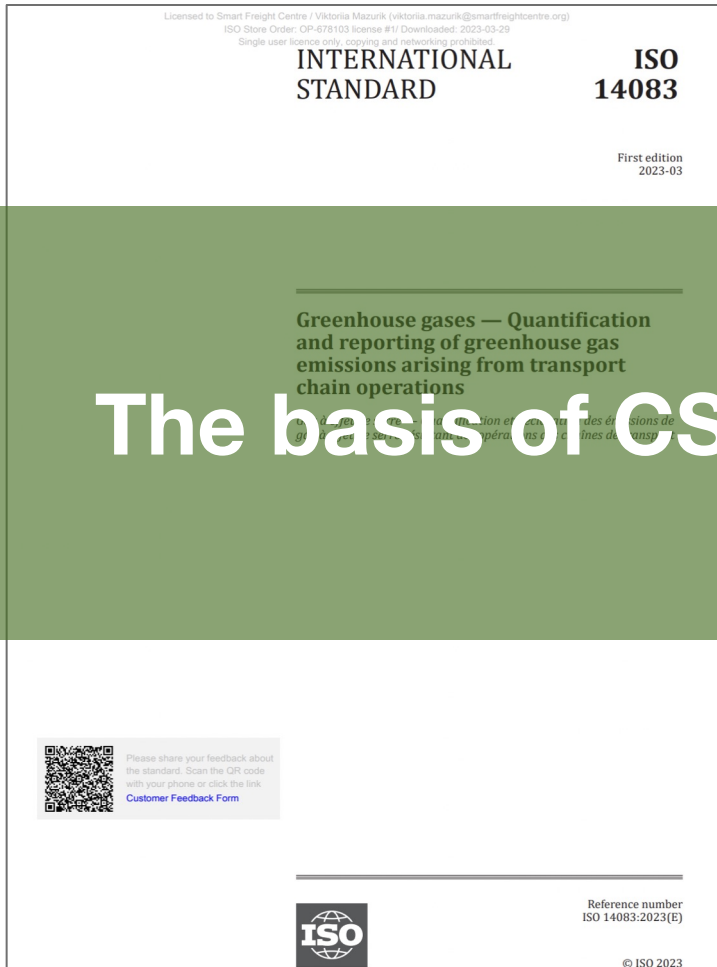
Standards	2'
Importance of standardization	5'
Project description	5'
Get involved	2'
Q&A	5'



What is new with the standards for CO2 accounting?

Publication of ISO14083

The new norm for logistics emissions accounting



The basis of CSRD and Count Emissions EU

For now, the **only** globally recognized methodology to calculate GHG emissions consistently across the multi-modal logistics supply chain

GLEC Framework

The standard for logistics emissions accounting




**Global
Logistics
Emissions
Council
Framework**

Launch 2023

For logistics Emissions
Accounting and Reporting | V3.0



GLEC    Smart Freight
Centre

**Calculating GHG transport and
logistics emissions for the
European Chemical Industry**



Module 5 of the GLEC Framework
written in partnership with Cefic
September, 2021

The GLEC framework will act as an “easy-to-digest” version which is kept up to the industry trends.

Module 5 is specific to the **chemical industry** and defines how to account for emissions:

- Definition of TOCs
- Specific operations: cleaning, pipeline transport



Importance of standardisation

Importance of standardisation?



Set a common language

Set then a common "grammar rule" guidance

Facilitate the exchange of GHG information between parties by focusing on standardising the data variables and constraints

Why now? CSRD, CountEmissionsEU

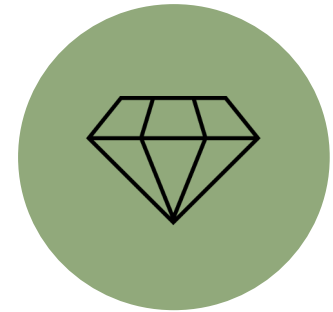
EU policies will require more transparency ...



Addresses many companies, requires them to set **targets and report progress** based on those commitments



Limited **assurance** has been introduced currently progressing to higher levels over time.



Early compliance offers **advantages against slow adopters** as the production & distribution can be optimised on carbon measures ahead of competitors.

Conclusion !



These new standards will shape up the regulatory scene and translate soon to corporate requirements for **reporting** and **assurance**.



Engaging now in semantics alignment projects and investing in IT development will ensure easier **compliance** & lay the foundation to the **revision of SQAS & ECTA RC KPIs**



**Smart Freight
Centre**

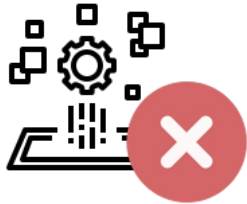


Integrating Logistics Emissions and PCFs – description

Out of scope



We are not going to be keeping a copy of participants data



We are not going to create a platform of solutions



Every participant is in control of their data

Project Description

Motivation & problem statement

1

Compliance with upcoming **regulatory obligations**

2

More **customers** are requesting PCFs from companies

3

Logistics emissions are often a significant (>20%) share of a PCF

iLEAP

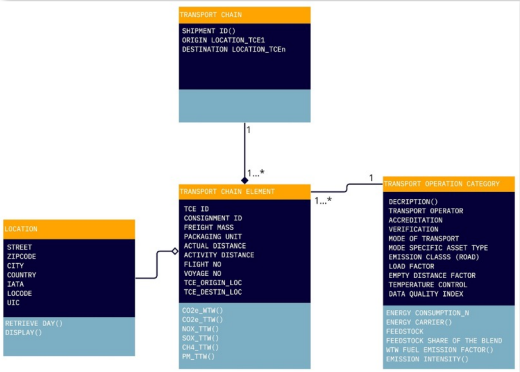
Integrating Logistics emissions and PCFs

Do you find difficulties with variable names and units & struggle to manipulate GHG data?

Bridging the gap...

Integrating Logistics Emissions into PCFs

GLEC Data Model for Logistics



Material acquisition & pre-processing

Production

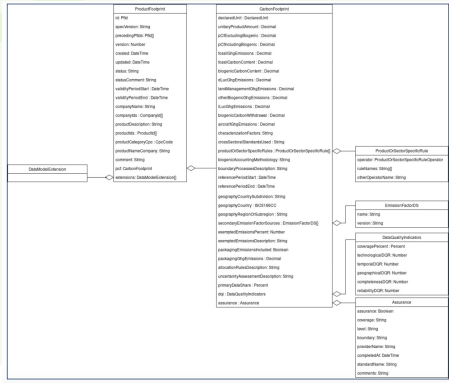
Distribution & storage

Use

End-of-life



PACT Data Model for PCFs



Based on GHG Protocol. Product Life Cycle Accounting and Reporting Standard

Transparency on the emissions impact created by products is essential for effective decarbonization business decisions



Setting accurate decarbonization targets

Determining how much reduction to aim for



Identifying where to tackle in the value chain

Understanding exactly where to engage to reduce



Tracking performance

Measuring effectiveness of decarbonization activities over time

PACT enables the businesses to **record**, **report** and **act** on **reliable** and **accessible** emissions data to drive corporate climate action, particularly in the supply chain via a Global / Common Standard for exchanging Product Carbon Footprint Emission data.

Such data is key to -

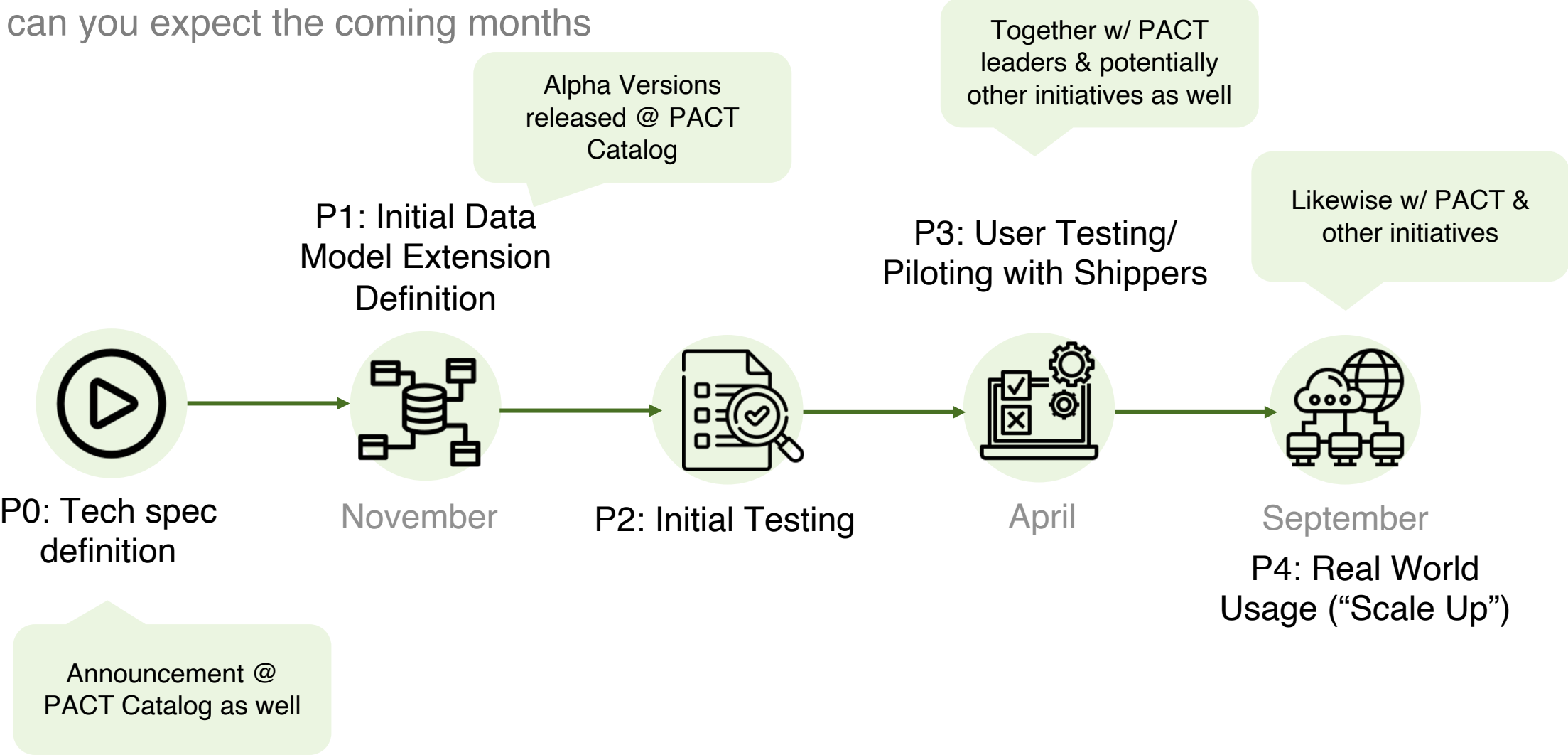
- Setting **accurate** net zero targets,
- Identifying **specific intervention areas** in the value chain with maximum (decarbonization) impact
- **Accurately tracking performance** of emission reduction initiatives against established targets

A wide-angle photograph of a river scene. On the left, a large, modern arch bridge with a white steel structure spans across the water. In the middle ground, a long, dark-colored barge with a white cabin is moving from left to right, leaving a wake. The background features a line of wind turbines and several high-voltage power line towers under a clear blue sky with a few wispy clouds. The water is a deep blue-grey color.

Do you want to be involved?

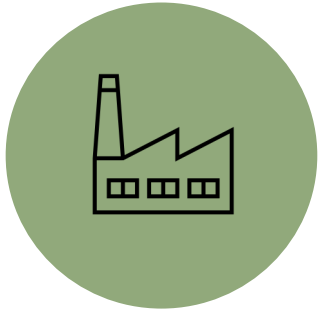
Project timeline

What can you expect the coming months



Added value

What is the value for each stakeholder



Shippers **reflect supply chain decarbonization efforts** at product level faster



Carriers and LSPs bring **visibility at TCE level** and **shape the standard** to report logistics emissions to their customers



Tool providers bring in **experience in using data attributes** to calculate emissions and help **shape the technical specifications** while updating their tools

Questions

- 1 Use your phone to **scan the QR code** shown on the right and **navigate to the website** displayed. Alternatively, open your browser and **go to www.menti.com**. When prompted, **enter the code 5518 9978**.
- 2 **Wait** until the survey is shown on your screen.
- 3 Please **answer the questions**.



 Mentimeter

Thank you for your attention

For more information, please visit:

You can also reach me at:

violetta.matzoros@smartfreightcentre.org

